



COOPERATION INNOVATION WIN-WIN

Construction Business,
Choose Wimer
Guarantee of Prosperity for All.

WIMER Driving the future



ENGINE:	Cummins 6BTAA5.9
Gross Power:	110KW/2000rpm
Operating Weight:	22.2 ton
Bucket Capacity:	1.0cbm

** Ask dealer other option

CRAWLER EXCAVATOR

LTE220-C



CHECK-AROUND

The LTE220-C excavator provides all the elements to give you the lowest cost to own and operate. At the end of the day, it all comes down to how much you got done and how much did it cost you. LTE220-C offer you the tools to help lower your owning and operating costs.

STRONG AND SPACIOUS CAB

- Adopts integral framework structure and one-piece stamp forming, which is safe and reliable

“X” FRAME UNDERCARRIAGE

- “X” frame undercarriage contributes to stability during complex excavation.

REINFORCED STRUCTURE PARTS

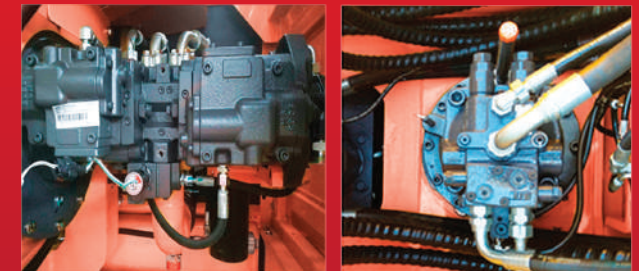
- Fully optimize the design of structural parts, strengthen the key stress points, and no fear of any tough works.
- Multiple specification for arm, boom, and bucket combination, suitable for all kinds of working conditions.

POWERFUL TIER II ENGINE

- Equipped with SAE J1995 110KW Cummins B5.9 engine,
- Tier II emission, high efficiency and durability;
- High altitude adaptability, providing stable power output.
- Three stage fuel filter provides excellent water removal over the life of the filter
- Batteries 2 x 120Ah

RELIABLE HYDRAULIC SYSTEM

- Kawasaki hydraulic system, high-end and reliable, reduce energy loss.
- Provide reliability and outstanding controllability.
- Germany brand (Hawe-Inline of main valve). Big flow and pressure, higher effective
- Germany brand (Hawe-Inline of swing motor)



THOUGHTFUL DESIGN FOR COMFORTABLE DRIVING



SPACIOUS AND COMFORTABLE OPERATING ENVIRONMENT

- Great all around visibility and exceptional operator comfort.
- New injection molding interior, simple and modern design.
- Suspended seat, provides excellent comfort.
- The cab shell is attached to the frame with viscous rubber cab mounts, which dampen vibrations and sound levels while enhancing operator comfort.

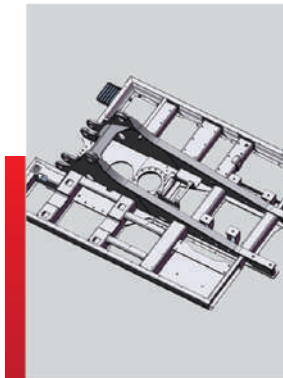


- Standard equipped with Radio, cigarette lighter, fire extinguisher, and escape hammer.
- Frequently used switches have been relocated for easier access.

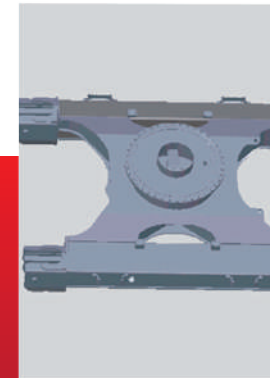


- The layout of the interior has been redesigned to maximize operator comfort and reduce operator fatigue.
- Multi-information monitor with self diagnostic DTC

MORE CONCERNED ABOUT SAFETY



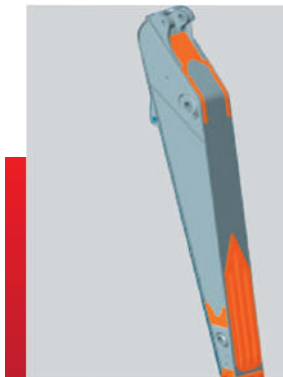
- Use CAE to analyze and optimize the structure, increase the height of the upper frame side beam, and select thicker steel plates for the stress points to improve the rigidity and strength of the main frame.



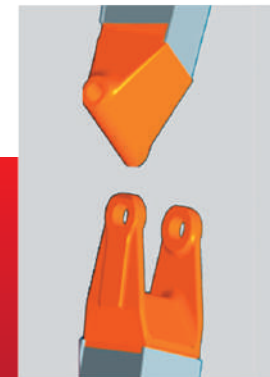
- The lower frame adopts X-shaped box structure to ensure high load capacity and the steel plate at stress points are thickened to improve reliability and durability.



- The covering parts adopt advanced automobile production technology, with complete mold forming, electrophoresis treatment technology, and weather-resistant toxic free paint, assuring the machine durable and strong in reliability



- The front support of the arm is one piece casted, and the stress points are strengthened to achieve better reliability.



- The front yoke and rear sear of the boom adopt a casting box form, which can bear multi-directional variable torque load.



- The heavy duty bucket are standard equipped with reinforced adapter and rock type tooth, which has better toughness and better wear life.

EASY MAINTENANCE



AC filters can be easily removed, installed and cleaned.



High-performance filtering material contributes to long maintenance interval.



Negative switch contributes to easily and quickly power cut off.

OPTIONAL ATTACHMENT



RIPPER



COUPLER



HYDRAULIC BREAKER



SHEAR



GRAPPLE



SKELETON BUCKET



CLAMSHELL

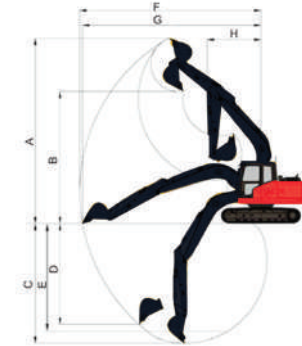


TILT BUCKET

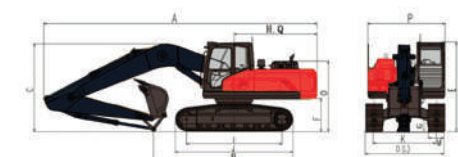
SPECIFICATIONS

ENGINE	
Model	CUMMINS 6BTA4.9
Type	Inter-cooled
No. of cylinder	6
Emission Regulation	Tier 2 / Stage II
Displacement	5.9L
Torque	630 Nm/1600rpm
Power net output	108KW/2000rpm
HYDRAULIC SYSTEM	
Type	Negative flow control
Max. discharge flow	2x228L/min
DIGGING FORCE (ISO6015)	
Bucket digging force	155KN ISO
Arm digging force	112KN ISO
BUCKET	
Type	Backhoe Bucket
Bucket capacity	1.0M3
Bucket width	1.2M
TRAVEL SYSTEM	
Type	Hydraulic Motor
Support roller quantities	2x9
Carrier roller quantities	2x2
Travel shoes	2x49
Travel speed	5.2/3.5KM/H
Drawbar pulling force	210KN
Grade ability	70%(35°)
SWING SYSTEM	
Swing motor type	Plunger Motor
Swing speed	11.5/min
Brake type	Hydraulic Motor
REFILLING CAPACITIES & LUBRICATIONS	
Fuel tank	350L
Cooling system	28L
Engine oil	20L
Hydraulic oil tank	246L
Hydraulic System Capacity	400L
OPERATING WEIGHT AND GROUND PRESSURE	
Shoe width	600mm/800mm
Ground pressure	35.3KPA (SHOE 800) 46.5KPA (SHOE 600)
Operating weight	22200KGS
HYDRAULIC SYSTEM AND SWING TORQUE	
Hydraulic System Relief	380 kgf/cm ²
Pilot circuit	40 kgf/cm ²
Swing torque	81 kN.m
Pilot circuit rated flow	27 L/min

SCOPE OF WORK (MM)		
A	Max. digging height	9780
B	Max. dumping height	6960
C	Max. digging depth	6730
D	Max. vertical digging depth	6280
E	Max. Depth cut for 2500mm Level Bottom	6560
F	Max. digging distance	9980
G	Max. digging radius at ground level	9820
H	Min. swing radius of work equipment	3740



DIMENSIONS (MM)		
A	Overall length	9590
B	Ground contact length (Transportation)	3260
C	Overall height (to top of boom)	3040
D	Overall width	2780
E	Overall height (to top of cab)	3120
F	Counter weight ground clearance	1065
G	Ground clearance	466
H	Tail swing radius	2720
I	Tread	3655
J	Track length	4460
K	Track gauge	2180
L	Track width	2780/3180
M	Shoe width	600/800
O	Bonnet height	2375
P	Revolving frame width	2725
Q	Distance from swivel center to tail	2720
	Boom length	5680
	Arm length	2920



* The specifications are subject to change without notice. The pictures may include options. The actual color & appearance of the product may differ from what is shown.